

# COMPANY PROFILE



**FULLONG**

**Dingpei Industry (Shenzhen) Co., Ltd**

# Brief Introduction



Dingpei Industry (Shenzhen) Co., Ltd is a professional car multimedia player manufacturer in China. We were established in 2017 and have branches in Hong Kong, Shenzhen and Ningbo.

Dingpei Industry (Shenzhen) Co., Ltd is mainly engaged in technical research and development of car radio software and hardware, overseas customer business services, and has a professional after-market car stereo production workshop.

Ningbo Fulang Technology Co., Ltd is a before-market car radio production base jointly established by DinPei in Ningbo with an investment of 150 million yuan. It covers an area of 48,000 square meters and a construction area of 50,000 square meters. It has 250 employees, and professional equipment including SMT, DIP, assembly testing, etc.

To guarantee the quality, all products have/CE/FCC/ROHS certification. In order to meet car factory demands, our company passed IATF 16949:2016, quality is our culture!

# Factory Show

dinpei hk



02

# Manufacturing





## SMT Workshop Display



DingPei has introduced internationally leading automated and intelligent production equipment, has an excellent production technology team, and 4 new YAMAHA SMT production lines. It relies on the construction of digital factories and implements an intelligent manufacturing management platform.

## SMT Workshop Equipment Display



**Automatic PCB  
feeding equipment**

It adopts hydraulic power and induction technology to automatically correct and achieve safe production.



**Automatic solder  
paste printing**

PCB high-precision printing resolution, automatic stencil positioning, automatic PCB correction, automatic squeegee pressure adjustment, automatic printing.



**Automatic solder  
paste detector**

12Mega color camera, 10-bit imaging, detection accuracy can be increased three times, no need to shoot independently for fiducial mark and bad mark.



**Automatic YAMAHA  
SMT 4-Line**

The "high-speed universal integrated placement head" achieves high speed and versatility at the same time, can mount a wide range of components, perfectly interprets Limitless EXpansion.

## SMT Workshop Equipment Display



**Automatic reflow soldering**

The 15% improvement in heat transfer efficiency can easily cope with the lead-free process requirements of more complex and larger welding products, and the dual guide rail structure effectively.



**Automatic optical inspection**

3D laser inspection for pin soldering and floating components, 1.2-meter LED board inspection function, intelligent programmable control of light source, and dual-track to achieve a 40% increase in production.



**Intelligent first article detector**

FAI600 uses an advanced artificial intelligence system to conduct first-piece inspection conveniently, quickly, accurately and reliably, effectively eliminating human errors.



**HD computer microscope**

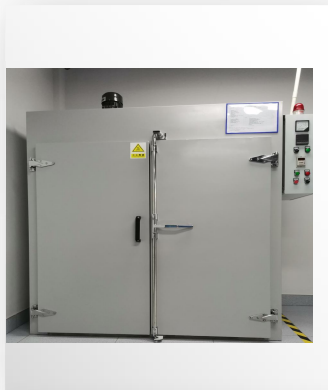
It has 5 million high-definition pixels and is very stable when powered directly by the USB interface. The magnification can be changed between 14x and 600x.

## SMT Workshop Equipment Display



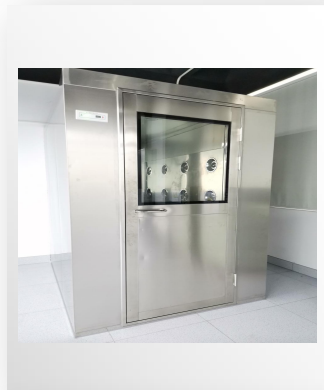
### X-Ray detector

Using the most advanced micro-focus spot X-ray tube & digital flat-panel detector, CNC stepping function & automatic detection and determination program.



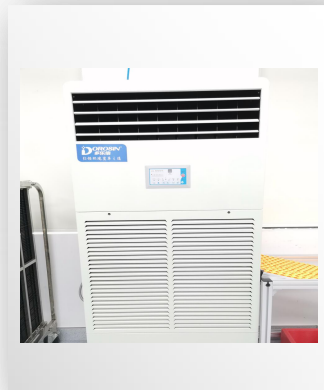
### High temperature oven

Used for baking and preheating of various processes such as plastics, hardware, silk screen printing, spraying, multi-layer circuit boards, soft boards and electronic components.



### Dust removal room

Effectively and quickly remove dust from people and objects, reduce the amount of dust brought into the clean room, prevent the intrusion of unclean air, and ensure the required cleanliness.



### Humidifier

Wide-angle air outlet, water circulation humidification, large-capacity water tank, water shortage protection, fiber wet film, two-way fan, universal roller, using water circulation technology.



## DIP Workshop Display



DIP Line



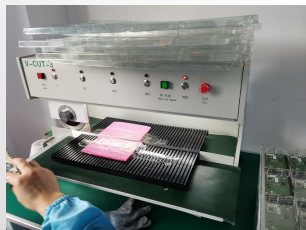
PCBA Testing Line

## DIP Workshop Equipment Display



**automatic visual  
depaneling  
machine**

The entire series is equipped with a high-speed CCD visual automatic correction system and uses a high-speed spindle for PCB cutting and depaneling, which is suitable for circuit boards of any shape.



**Cutting board  
machine**

The sliding speed of the circular knife can be adjusted. For different depths of V-groove, the distance between the upper circular knife and the lower straight knife can be adjusted.



**Automatic bulk  
shearing machine**

The controller adopts Japanese electronic components, which has a long life and stable feeding. The motor and electrical parts are imported from Taiwan. The electrical combination ensures good feeding effect and fast speed.



**Wave soldering**

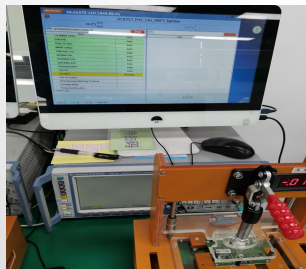
Real-time monitoring of oxygen concentration, PID closed-loop control of nitrogen flow, achieving a stable PPM value in the furnace, effectively saving nitrogen consumption.

## DIP Workshop Equipment Display



### Laser coding machine

The laser marking machine marks a permanent mark that cannot be erased. It is instantly vaporized directly on the surface of the object by a laser. It can be distinguished by the naked eye without the use of any auxiliary tools, making it easy for consumers to identify.



### Radio communication

Includes a fully integrated end-to-end data solution that enables comprehensive IP throughput and quality measurements, making testing under real-world transmission conditions simple with the help of an internal fading simulator.



### Wireless network tester

The IQ2010 test system uses multiple modules to provide testing, allowing GPS and FM to be tested in parallel with Wi-Fi, WiMAX, Bluetooth and NFC standard groups.



### automatic vacuum packaging

It is suitable for packaging with plastic composite film to achieve the functions of oxygen isolation, moisture-proof, mildew-proof and insect-proof.

## Assembly Workshop Display



Final assembly line



Dust-free fit room



03

# Laboratory



## Laboratory Workshop Display



13 laboratory workshop

20 Automatic aging cabinets



## Laboratory Workshop Display



High and low temperature test



ESD test



7637

# Laboratory Workshop Display



Salt spray test



Vibration test



Temperature shock test chamber



## Laboratory Workshop Display



**Drop test**



**Load displacement curve  
testing machine**

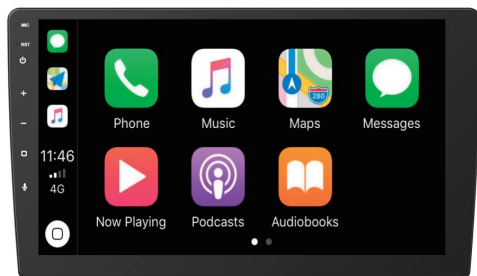


**Drops of rain test chamber**

04

# Products & Projects & Certification





**Linux & Android  
9" & 10.1"**



**Linux & Android  
Private model design**



**Suzuki Project**



**Hyundai Project**



**JAC-S3 Project**



**KIA Project**



## *Certificate of Registration*

This certifies that the Quality Management System of

### **Ningbo Fulang Technology Co., Ltd.**

The East Side of Floor 4, No.58, Lijing Road, Chengnan Hi-tech Enterprise Park,  
Xiangshan County, Ningbo City, 315700  
Zhejiang, China

has been assessed by NSF-ISR and found to be in conformance to the following standard(s):

## **IATF 16949:2016**


### **Scope of Registration:**

Design and Manufacturing Electronic Control System for Intelligent Cockpit

### **Exclusions: NA**

IATF Certificate Number: 0475803  
Certificate Number: C0650973-TS4-C0762352  
Certificate Issue Date: 09-JUN-2023  
Registration Date: 31-MAY-2023  
Expiration Date \*: 30-MAY-2026



  
Sameer Vachani  
Senior Director, NSF-ISR

### **NSF International Strategic Registrations**

789 North Dixboro Road, Ann Arbor, Michigan 48105 | (888) NSF-9000 | [www.nsf-isr.org](http://www.nsf-isr.org)



**HTT TECHNOLOGY**

### Certificate of Conformity

Certificate No. : HTT20100088E  
 Applicant : DinPei Electronics (HK) Limited  
 Address : Building A, Water International Cultural Creative Industry Park, Jihua Road, Longgang District, Shenzhen, China  
 Manufacturer : DinPei Electronics (ShenZhen) Limited  
 Address : Building A, Water International Cultural Creative Industry Park, Jihua Road, Longgang District, Shenzhen, China  
 Product : Car Stereo  
 Model No. : DP006, DP001-DP009, DP001-DP009, DP001-DP009, DP1201-DP129, DP001-DP009, DP201-DP209, DP001-DP009, DP001-DP009  
 Trademark : N/A

The following products have been tested by us with listed standards and found to be compliance with the council EMC 2014/53/EU. It is possible to use CE marking to demonstrate the compliance with this EMC.

Test standards	Report No.	Issued By	Issued Date
EN 55022:2005+A1:2006+A11:2009 EN 55024:2005+A1:2009 EN 61010-1:2009 EN 61010-2-01:2009	HTT20100088E	HTT	Sep.10,2021

This certificate of conformity is not transferable and based on an evaluation of a sample of the above mentioned product.

Authorized Signer:  **HTT**  
 KevinYang/Senior Manager  
 Date: Sep.10,2021

Shenzhen HTT Technology Co., Ltd. Web: www.httjpc.com  
 TEL: 0755-21992100 FAX: 0755-21992101 Hotline: 400-6655-351 Mail: info@httpc.com

CE

**HTT TECHNOLOGY**

### Certificate of Conformity

Certificate No. : HTT20100088R  
 Applicant : DinPei Electronics (HK) Limited  
 Address : Building A, Water International Cultural Creative Industry Park, Jihua Road, Longgang District, Shenzhen, China  
 Manufacturer : DinPei Electronics (ShenZhen) Limited  
 Address : Building A, Water International Cultural Creative Industry Park, Jihua Road, Longgang District, Shenzhen, China  
 Product : Car Stereo  
 Model No. : DP006, DP001-DP009, DP001-DP009, DP001-DP009, DP1201-DP129, DP001-DP009, DP201-DP209, DP001-DP009, DP001-DP009  
 Trademark : N/A

This is to certify that, on the basis of the tests undertaken as per Report No. HTT20100088CH, the submitted sample of the above item complies with:

IEC 62321-4:2013+A1:2017  
 IEC 62321-6:2015  
 IEC 62321-6:2015  
 IEC 62321-7-1:2015  
 IEC 62321-7-2:2017  
 IEC 62321-8:2017

And fulfills testing requirement of the RoHS directive 2011/65/EU Annex II amending Annex (EU)2015/963 and amending Annex (EU)2017/2102.

**RoHS**

Authorized Signer:  **HTT**  
 KevinYang/Senior Manager  
 Date of issue: Sep.10,2021

Shenzhen HTT Technology Co., Ltd. Web: www.httjpc.com  
 TEL: 0755-21992100 FAX: 0755-21992101 Hotline: 400-6655-351 Mail: info@httpc.com  
 16 B Building, Huafeng International Innovation Industrial Park, Gaohuo, Xixiang Street, Xixiang District, Shenzhen, China

ROHS

**HTT TECHNOLOGY**

### FCC SUPPLIER'S DECLARATION OF CONFORMITY

Certificate Number: HTT20100088F  
 Product Name: Car Stereo  
 Applicant: DinPei Electronics (HK) Limited  
 Address: Building A, Water International Cultural Creative Industry Park, Jihua Road, Longgang District, Shenzhen, China  
 Manufacturer: DinPei Electronics (ShenZhen) Limited  
 Address: Building A, Water International Cultural Creative Industry Park, Jihua Road, Longgang District, Shenzhen, China  
 Model No.: Car Stereo  
 Trade Mark: DP006, DP001-DP009, DP001-DP009, DP001-DP009, DP1201-DP129, DP001-DP009, DP201-DP209, DP001-DP009, DP001-DP009

Applicable standards: FCC CFR Title 47 Part 15 Subpart B:2017  
 The products comply with the FCC regulations and the electromagnetic compatibility evaluation requirements.

The test result has been evaluated by Shenzhen HTT Technology Co., Ltd. laboratory and showed in the test report

The test report number: HTT20100088F

It is understood that each unit marketed is identical to the device as tested, and any changes to the device that could adversely affect the emission characteristics will require retest.

The following responsible party designated in FCC §2.909 is responsible for this declaration:

Authorized Signer:  **HTT**  
 KevinYang/Senior Manager  
 Date: Sep.10,2021

Shenzhen HTT Technology Co., Ltd. Web: www.httjpc.com  
 TEL: 0755-21992100 FAX: 0755-21992101 Hotline: 400-6655-351 Mail: info@httpc.com  
 16 B Building, Huafeng International Innovation Industrial Park, Gaohuo, Xixiang Street, Xixiang District, Shenzhen, China

FCC



# THANKS

Dingpei Industry (Shenzhen) Co., Ltd

dinpeihk



FULLONG